

CLERK'S RECORDING CERTIFICATE

I, MARSHA STILLER, CLERK OF THE CIRCUIT COURT OF MARTIN COUNTY, FLORIDA, HEREBY CERTIFY THAT THIS PLAT WAS FILED FOR RECORD IN

PLAT BOOK 14, PAGE 51,
MARTIN COUNTY, FLORIDA, PUBLIC RECORDS THIS
29 DAY OF June, 1998.

MARSHA STILLER, CLERK OF THE CIRCUIT COURT
MARTIN COUNTY, FLORIDA.

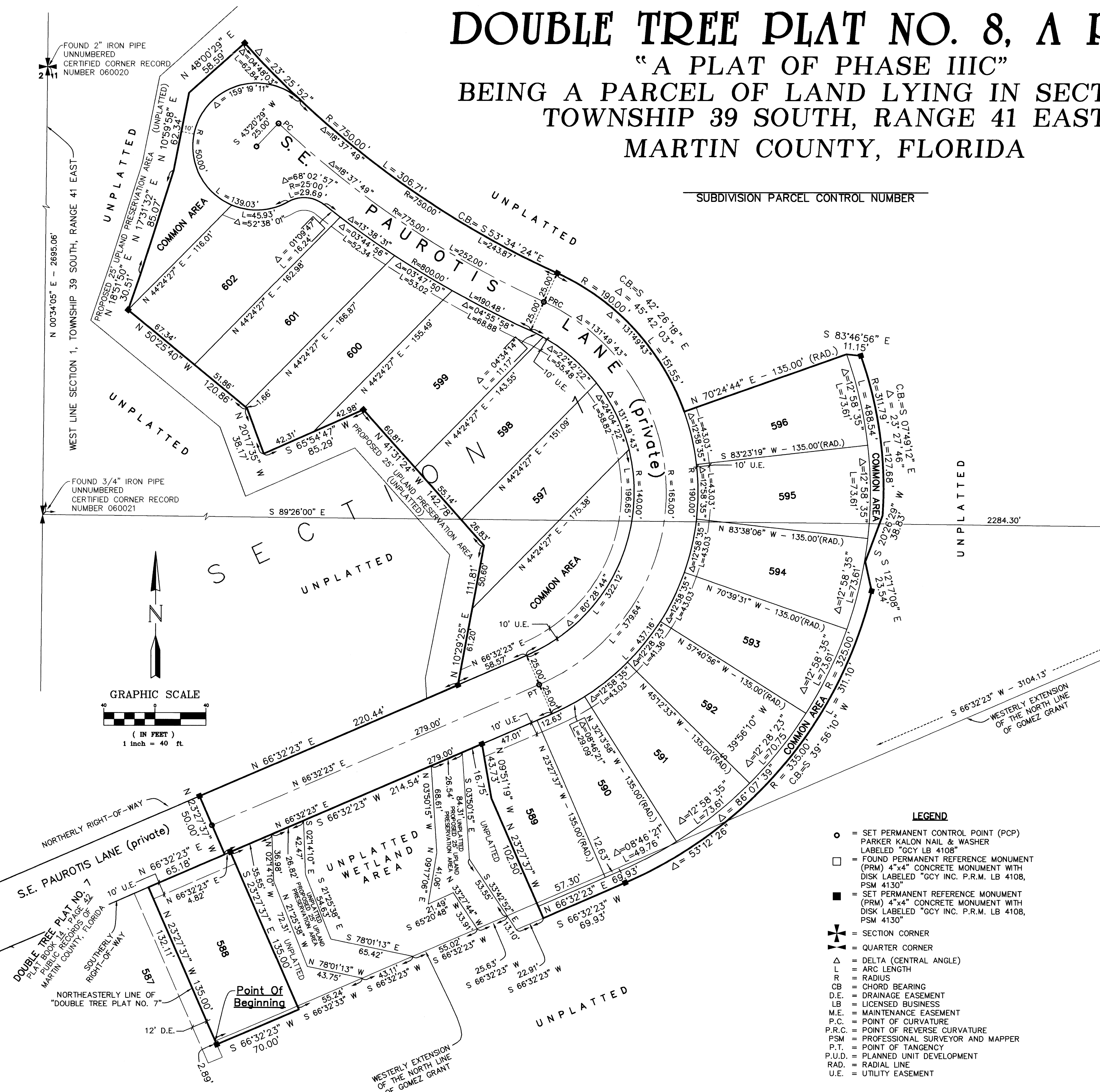
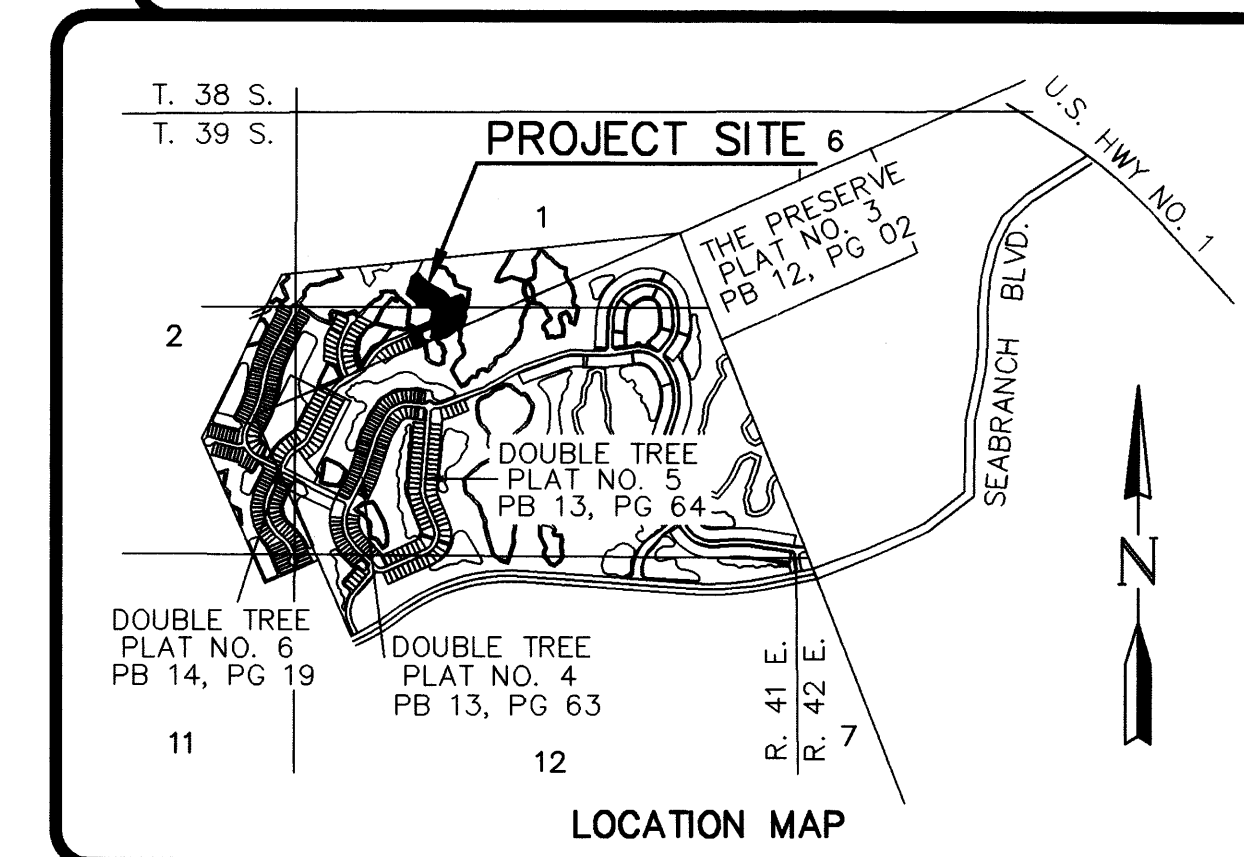
FILE NUMBER 1306105 BY *J. Wood*
DEPUTY CLERK

DOUBLE TREE PLAT NO. 8, A P.U.D.

"A PLAT OF PHASE III C"

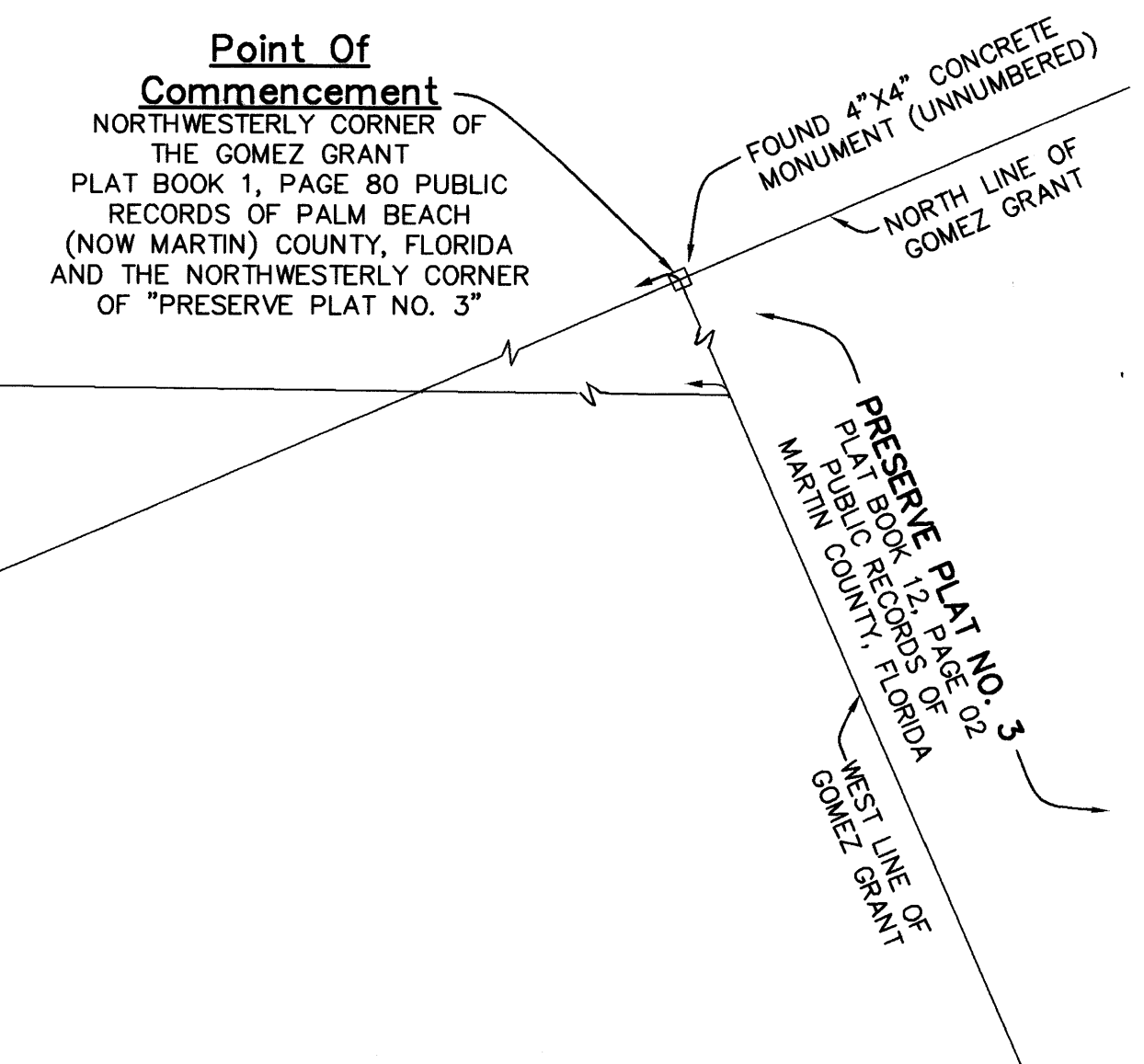
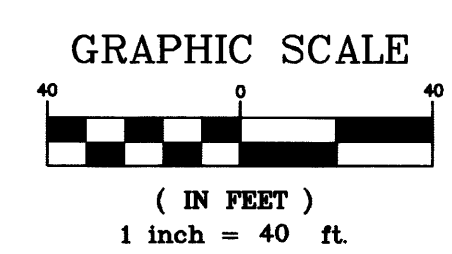
BEING A PARCEL OF LAND LYING IN SECTION 1, TOWNSHIP 39 SOUTH, RANGE 41 EAST MARTIN COUNTY, FLORIDA

SUBDIVISION PARCEL CONTROL NUMBER



FOUND 2" IRON PIPE
UNNUMBERED
CERTIFIED CORNER RECORD
NUMBER 060020

FOUND 3/4" IRON PIPE
UNNUMBERED
CERTIFIED CORNER RECORD
NUMBER 060021



SURVEYOR'S NOTES

- 1) THIS PLAT, AS RECORDED IN ITS ORIGINAL FORM IN THE PUBLIC RECORDS, IS THE OFFICIAL DEPICTION OF THE SUBDIVIDED LANDS DESCRIBED HEREON AND WILL IN NO CIRCUMSTANCES BE SUPPLANTED IN AUTHORITY BY ANY OTHER FORM OF THE PLAT, WHETHER GRAPHIC OR DIGITAL.
- 2) THERE MAY BE ADDITIONAL RESTRICTIONS THAT ARE NOT RECORDED ON THIS PLAT THAT MAY BE FOUND IN THE PUBLIC RECORDS OF THIS COUNTY.
- 3) THERE SHALL BE NO BUILDING OR ANY OTHER KIND OF CONSTRUCTION, OR PLACEMENT OF TREES OR SHRUBS ON DRAINAGE EASEMENTS.
- 4) BEARINGS SHOWN HEREON ARE REFERENCED TO THE NORTHEASTERLY LINE OF "DOUBLE TREE PLAT NO. 7, A P.U.D.", AS RECORDED IN PLAT BOOK 14, PAGE 42, PUBLIC RECORDS, MARTIN COUNTY, FLORIDA. SAID LINE BEARS NORTH 23°27'37" WEST.

LEGEND

- = SET PERMANENT CONTROL POINT (PCP) PARKER KALON NAIL & WASHER LABELED "GCY LB 4108"
- = FOUND PERMANENT REFERENCE MONUMENT (PRM) 4"x4" CONCRETE MONUMENT WITH DISK LABELED "GCY INC. P.R.M. LB 4108, PSM 4130"
- = SET PERMANENT REFERENCE MONUMENT (PRM) 4"x4" CONCRETE MONUMENT WITH DISK LABELED "GCY INC. P.R.M. LB 4108, PSM 4130"
- ✦ = SECTION CORNER
- ⊠ = QUARTER CORNER
- Δ = DELTA (CENTRAL ANGLE)
- L = ARC LENGTH
- R = RADIUS
- CB = CHORD BEARING
- D.E. = DRAINAGE EASEMENT
- LB = LICENSED BUSINESS
- M.E. = MAINTENANCE EASEMENT
- P.C. = POINT OF CURVATURE
- P.R.C. = POINT OF REVERSE CURVATURE
- PSM = PROFESSIONAL SURVEYOR AND MAPPER
- P.T. = POINT OF TANGENCY
- P.U.D. = PLANNED UNIT DEVELOPMENT
- RAD. = RADIAL LINE
- U.E. = UTILITY EASEMENT

GCY
INCORPORATED
PROFESSIONAL SURVEYORS AND MAPPERS

1505 S.W. MARTIN HIGHWAY P.O. BOX 1469
PALM CITY, FLORIDA 34991 (561-286-8083)

CERTIFICATE OF AUTHORIZATION LB 4108